

www.euroexportprojects.com
info@euroexportprojects.com



INDICE

- 2 - Presentation
- 4 - Textured CPL series
- 6 - 3D LUC Series
- 8 - Moldex lacquered series
- 10 - Smooth melamine series and CPL
- 12 - Inner structure
- 13 - Entrance doors and certified doors
- 14 - Ironwork
- 15 - Galces and flashings, construction systems



Textured CPL Series





Old walnut



Old walnut 1v



Oregon gin



Stained oak



Branched cherry



Branched cherry 3v



Luxury walnut



Walnut chemical pore



Mesh white



Mesh white 4v



White maple



Meshed oak

3D LUC Series





Nordic walnut



Spanish Walnut



Gray oak



Meshed oak



Anthracite walnut



1 glass

3 glass

Serie lacada moldex



Plain provencal



Straight Provencal



Riverside 5 frames



Provencal 6 Glasses



Provencal textured 6 glasses



Provencal straight 6 glasses

Lacquered series



Lacquered 4R



Lacquered H4



Lacquered 4R Premium



Smooth lacquered



Lacquered 4R
4 glasses



Smooth lacquered
1 glass



3R lacquered,
3 glasses

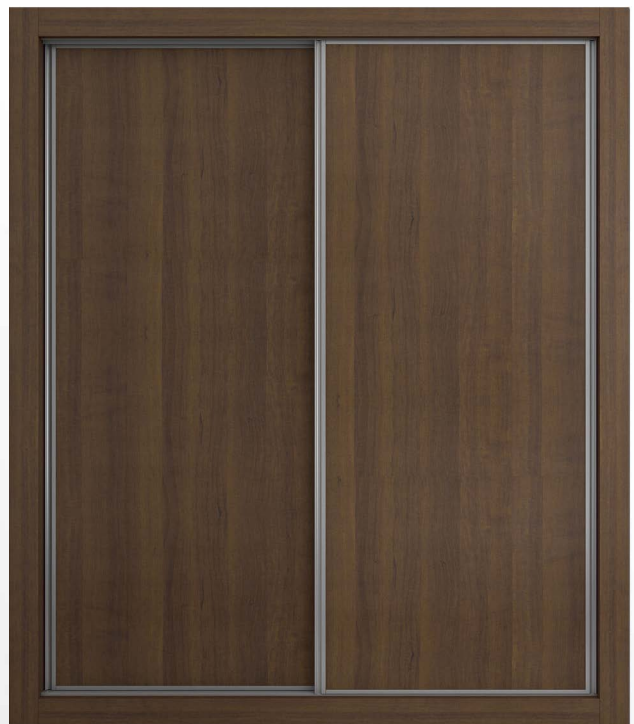


Lacquered H4
4 glasses

Smooth melamine series and CLP



Folding wardrobe



Sliding wardrobe



Oak



White



Beech fajeada



Greek beech fajeada



Greca veneered oak



girdled oak



Wenge



Horizontal
beech Vertical
beech



Light blue



Dark gray



White decapé striped



Light grey

Inner structure

Honeycomb Door

- o Faces in mdf board 3, 5, 7 or 10 mm
- o Frame in pine or mdf
- o Long PVC edges
- o Structural honeycomb mesh interior

3DLUC solid door

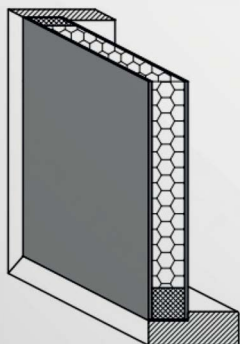
- o 35mm superpan board
- o mdf slat embedded in stringers
- o 4 PVC edges

Standard solid door

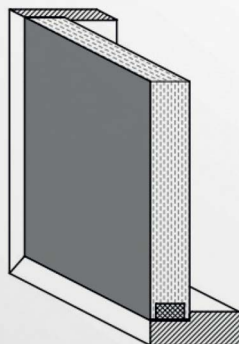
- o Faces in mdf board 3, 5, 7 or 10 mm
- o Frame in pine or mdf
- o Long PVC edges
- o Chipboard interior

Polystyrene door

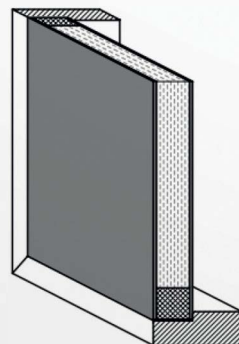
- o Faces in mdf board 3, 5, 7 or 10 mm
- o Frame in pine or mdf
- o Long PVC edges
- o Inner polystyrene panel



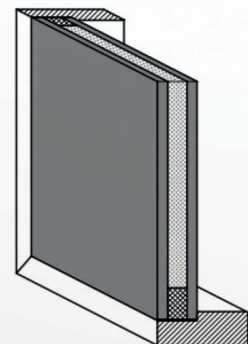
Honeycomb Door



3DLUC solid door



Standard solid door



Polystyrene door

Entrance doors

Standard solid door in 45mm

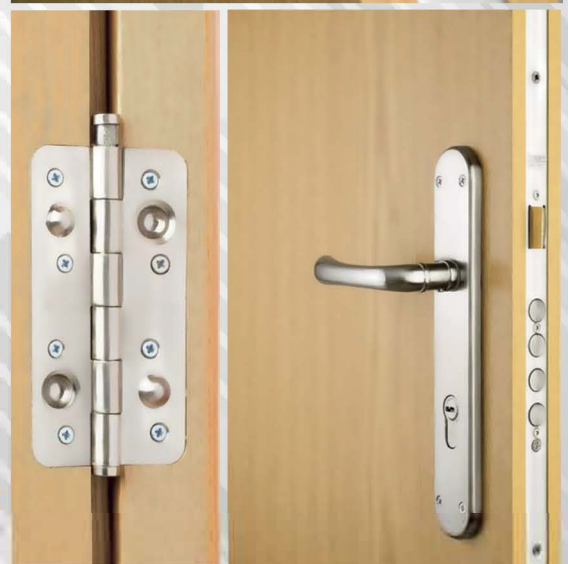
- o Faces in 5mm mdf board
- o Frame in pine or mdf
- o Long PVC edges
- o Chipboard interior

Reinforced door

- o Faces in 5mm mdf board
- o Pine frame
- o Long PVC edges
- o Interior double 0.5 mm steel sheet
- o Chipboard panel

Certified blocks

- Ei2 60-c5
- Ei2 30-c5
- Acoustics 31 dB



Hardware



Concealed hinge



Stainless hinge



Certified hinge



Sliding condemnation kit



Zeus handle



Cerr. Seg
1 point



Latch 47



Latch 70



Latch mag.



Cerr. wrench
Borja

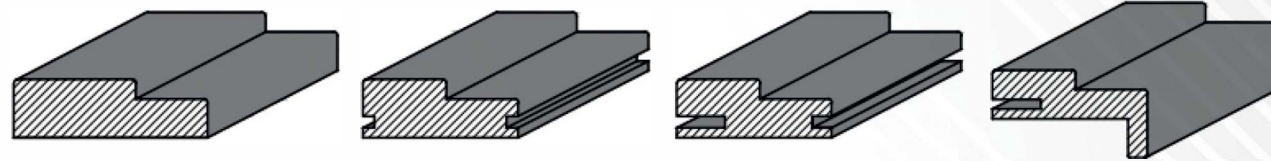


Cerr. Standard



Cerr. Seg
3 points

Galces and flashing



STANDARD RIM

CLIPED RABBIT

EXTENDABLE RIB

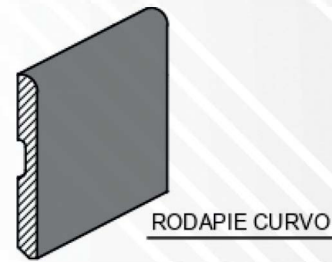
GALCE FRANGES



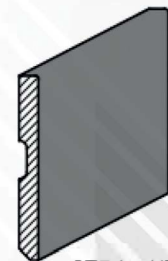
STANDARD COVER

CLIPED COVER

EXTENDABLE COVER



RODAPIE CURVO



STRAIGHT SKIRTING

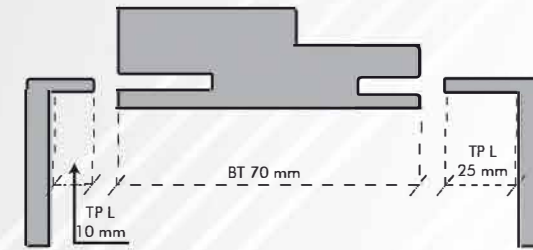


FLASHING MOD. 700



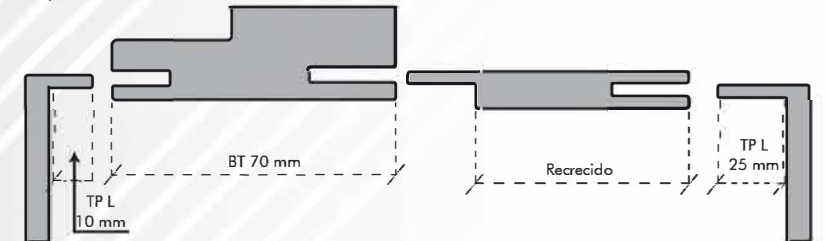
FLASHING MOD. 900

Extendable systems



TP L 10: Extendable cover of 10mm.
TP L 25: 25 mm extendable butt. BT 70: 70 mm extendable leaf.

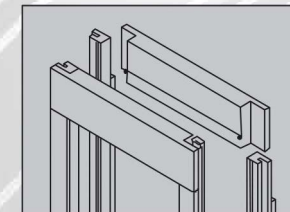
With this extensible system it will be possible to reach 70mm partitions. to 90mm.



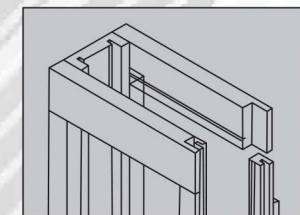
RAISED - A II, available to arrive or partitions of II

- A II, available to reach partitions of 3
- A II, available to reach partitions of 5

Sliding kit

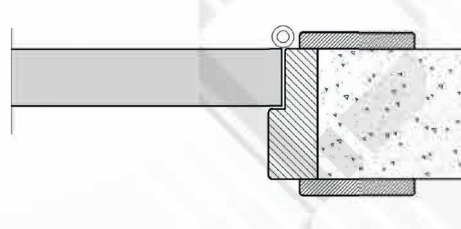


Ref: KID DOBLE
A: 90/108 mm.
B: 50/19 mm.
C: 25/19 mm.
Largo Standar: 2200 mm.

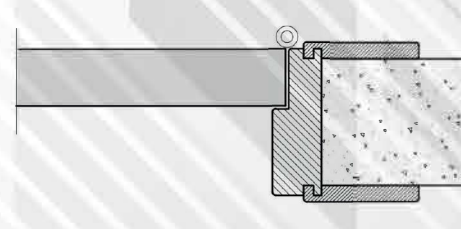


Ref: KID 110
B: 50/19 mm.
C: 25/19 mm.
Standard length: 2200 mm.

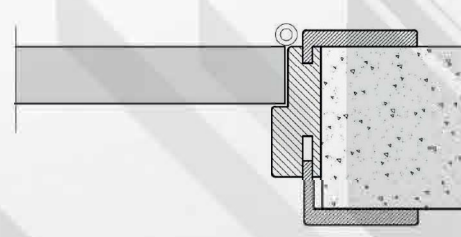
Construction systems



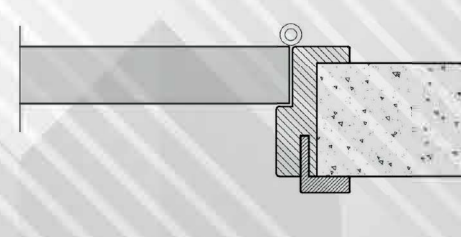
STANDARD SYSTEM



CLIPPED SYSTEM



EXTENDABLE SYSTEM



FRENCH SYSTEM

Technical specifications

Structures, longitudinal and transversal frames in pine wood solid 28x28 mm.

Honeycomb alveolar interior with average resistance 2.2kg/cm² DM wood fiber panels with thicknesses of 3 mm. and average density of 850Kg/m³•

Solid wood edge covered with synthetic PVC with wire on 2 sides.

3 hinges and unified latch, reversible with brass or satin stainless steel finish.

Approximate weight 9Kg/m² for doors with alveolar interior.



www.euroexportprojects.com - info@euroexportprojects.com - +34 633 294 688

