

EURO EXPORT PROJECTS S.L

**STONE
MARBLE SERIES**

BLOCKS/SLABS/TILES
QUALITY-FOCUS-INNOVATION



**If you're looking for different results,
do not do always the same things**

Albert Einstein

Info Phone: **(+34) 633 294 688**

Europe Phone: **(+34) 634 369 763**

Africa Phone: **(+251) 929 134 156**

info@euroexportprojects.com

www.euroexportprojects.com

ABOUT US

Euro Export Projects S.L.

It is a company that produces marble and granite.

We work in the extraction and elaboration with different quarries located in Spain, Italy, Greece, Portugal, etc.

We have a wide range of materials and colors, with the best features for the development of our projects.

Euro export Projects S.L is specialized in the export and execution of custom projects at different levels and sizes.

Our services: coatings, applications for facades with different installation Systems, Stairs, etc... If our client needs it, we provide the installation of the materials personally in the country of destination.

Euro Export Projects S.L, puts 100% of its engineers, production manage and to our commercials, for the advice, design and help that our clients.

Thanks to our human team and mainly to our clients, we have managed to work in the markets of, Spain/Europe, North and Ce Africa, Asia, America etc...

We are in a privileged geographical position, exactly in Alicante, Spain, w facilitates the manufacture and distribution of our products, with the neces really competitive quality and prices, with the greatest speed, efficiency a professionalism required by the highly competitive conditions of today's business scene. international.

From our beginnings
we work to be different

BUILDING A NEW MARBLE WORLD WITH PASSION



MARBLE MANUFACTURING PROCESS

1. Extraction: marble is extracted in the open or underground.

The deposit is what will determine the size of the blocks and the terrain will determine the form of extraction, whether it is from top to bottom or laterally.

2. Reception and unloading: the blocks are transferred to the factory for processing.

Later they are classified according to their size, fissures, cleanliness, tonality and number of veins, and they are taken to be sawn.

3. Cutting: if the blocks are large, this will be done on a loom.

There we will obtain the tables; if they are irregular and smaller, it will be done in a block cutter, where we will obtain the bands, to avoid waste.

4. Reinforcement and polishing: the marble is reinforced with a mesh.

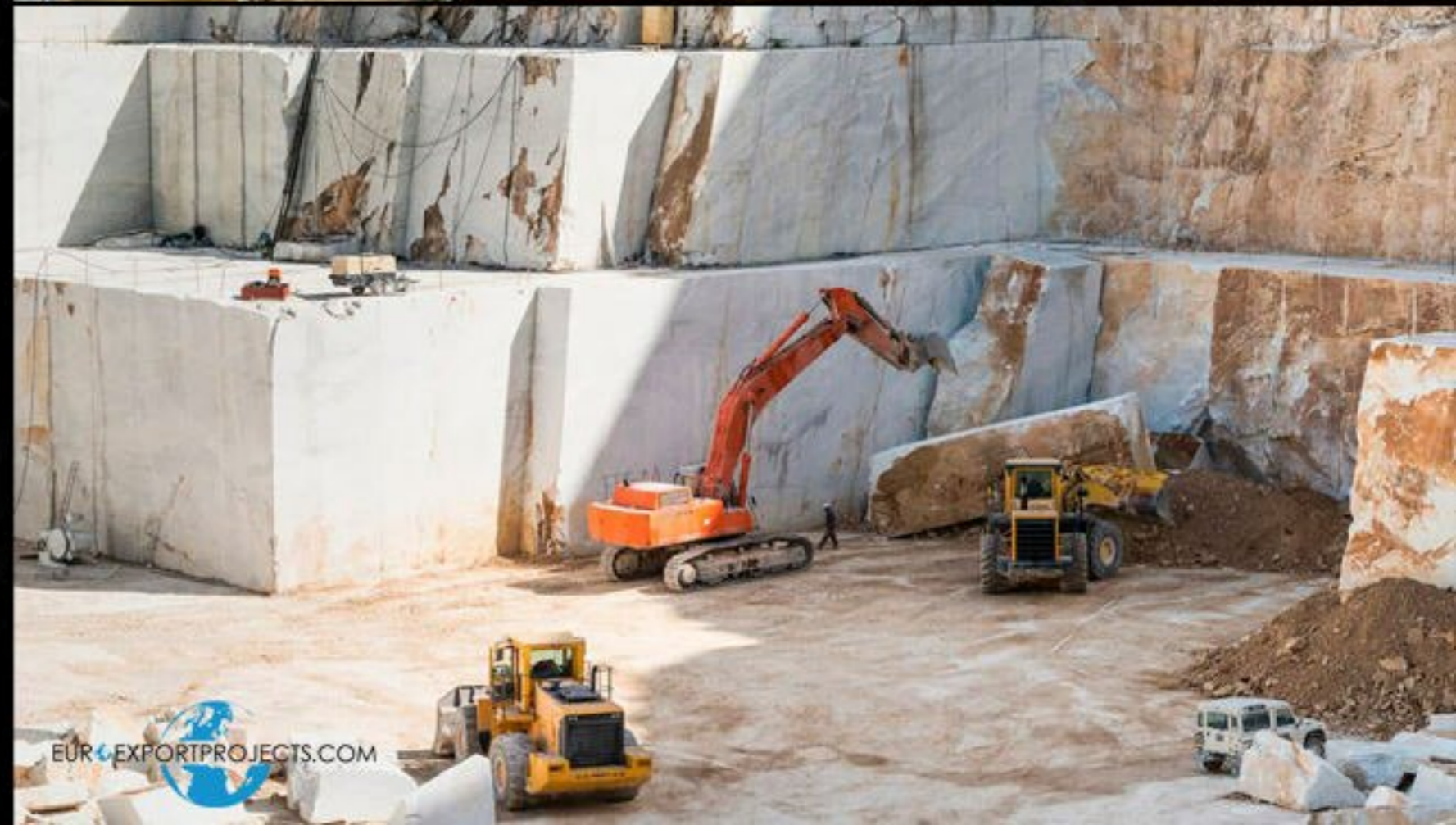
Subsequently, the material is given an appearance either with polished, ground, aged, sandblasted, scarfiled or bush hammered. If the objective of the marble is to be sold, this would be the last step of the process. Otherwise, it would go to a new cut and finish step.

5. Storage and transportation: depending on the objective or purpose of the marble slabs, transportation and storage will be one way or another. If the shipments will be made outside our borders, the marble will travel with a wooden reinforcement inside containers. If it is carried out within the national territory, iron trestles will be the solution.

The machinery for marble is nourished. There are units for polishing, cutting, machining and processing of granite, marble and other materials.

Others are string cutters, bridge cutters, cranes, or numerically controlled machinery.

The objective is that the worked marble is of the best quality.





PRODUCT ARTICLE

EURO EXPORT PROJECTS

info@euroexportprojects.com

CREMA MARFIL MARBLE

Crema Marfil Marble is the most outstanding marble worldwide, due to its performance and qualities. It is the star product and the king of marble. Thanks to the Cream color shades, it is suitable for all types of decoration, floors, walls, stairs, tops and facades.

All finishes, especially:

Aged: Smooth, rough, natural feel

Honed: Matte

Polished: Bright treatment, mirror feeling

Bush hammered

Habitual Sizes in CM:

30X30/30X40/40X40/40X60/60X30/60x60

/60x120/120x120,

Custom Sizes

Thickness Usual: 1/1.5/2/3cm.



TECHNICAL DATA:

Specific Weight: 2.72 gr/cm³

Absorption Coefficient: 0.15%

Resistance to Compression: 1253 kg/cm²

Bending Resistance: 198 kg/cm²

Wear Resistance: 0.35mm

Impact Resistance: 42 cm



UNALTERABLE COLORS
THAT LAST IN THE
WEATHER



FIRE RESISTANT
AND TO THE HEAT



BRIGHTNESS (LRV)



CREMA MARFIL MARBLE



CREMA MARFIL

Polished

It is the most characteristic finish and achieves an inimitable effect of reflecting light and objects as if it were a mirror.



CREMA MARFIL

Honed

This finish gives the stone a greater character and greater prominence when it is placed. It reflects light, but with less reflection. The surface is smooth.



CREMA MARFIL

Aged

Through a special treatment, a texture is achieved that enhances the natural properties of the stone and the aesthetic strength of its veins. The surface is somewhat uneven.



CREMA MARFIL

Bush hammered

Through this finish, the resulting product has a rough effect & a sheer touch, perfect for making it more resistant outdoors.



TABLES



WALLS



FLOORS



COUNTERTOPS

TRIANA YELLOW MARBLE

Yellow Triana Marble, impressive for its tonality and dark veins, with the presence of fossils on a showy yellow color make each piece unique. Its aesthetic value is recognized and its most common application is the decoration of interiors, tops and facades. It comes from Almeria, Spain.

All finishes, especially:

Aged: Smooth, rough, natural feel

Honed: Matte

Polished: Bright treatment, mirror feeling

Bush hammered

Habitual Sizes in CM:

30X30/30X40/40X40/40X60/60X30/60x60,
Cut Sizes.

Thickness Usual: 1/1.5/2/3cm.



Main advantages of Yellow Triana Marble:

Appearance: Unique color, high contrast streaks,

Versatile: Useful in many interior applications.

Reserves: The supply of this marble is guaranteed by important reserves

TECHNICAL DATA:

Specific Weight: 2.38 gr/cm³ Absorption Coefficient: 2.20% Resistance to Compression: 537.64 kg/cm²

Bending Strength: 91.29 kg/cm² Wear Resistance: 11.72mm Impact Resistance: 22 cm Frost Module: 0.05%



UNALTERABLE COLORS
THAT LAST IN THE
WEATHER



FIRE RESISTANT
AND TO THE HEAT

BRIGHTNESS (LRV)

TRIANA YELLOW



TABLES



WALLS



FLOORS



COUNTERTOPS

Polished

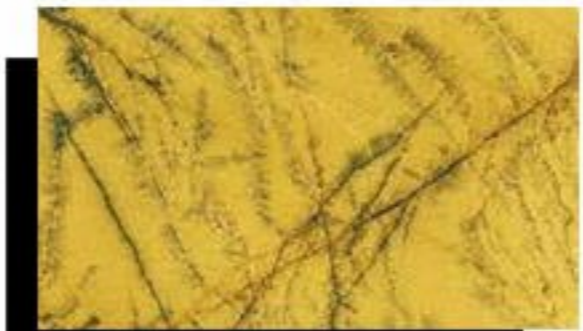
It is the finish par excellence that achieves a completely smooth Natural Stone surface and an inimitable mirror effect that reflects light, enhancing the beauty of the material.



TRIANA YELLOW

Honed

Thanks to this smooth and soft textured finish, the surface acquires a matte shine that gives Natural Stone greater character and better reflection of light.



TRIANA YELLOW

Sandblasting

With this finish we achieve a rough appearance. We can use it in interior and exterior coatings, as well as in exterior pavements since it is non-slip.



TRIANA YELLOW

Aged

This finish conveys the passage of time, achieving a shiny surface with an irregular texture that enhances the aesthetics of Natural Stone in its shades and veins.



TRIANA YELLOW



WHITE CARRARA

The White Carrara Marble is a rock in a thick and uniform compact state, with grayish-blue veins. Its elegance, resistance and brightness, allows us to make each room unique. They make it one of the perfect types of marble for bathrooms, floors and decoration in sculptures already used by ancient Imperial Rome Ipsum

ALL FINISHES ESPACIALLLY

Aged: Smooth, rough, natural feel

Honed: Matte

Polished: Bright treatment, mirror feeling
bush hammered.

Habitual Sizes in CM: 30X30/30X40/40X40/
40x60/60X30/60x60/60x120/120x120

Costom Sizes

Thickness Usual : 1/1.5/2 and 3cm.



TECHNICAL DATA:

Compression tensile strength: 1309 kg/cm²

Tensile strength after freeze-thaw cycles: 1144 kg/cm²

Unitary modulus of bending tensile strength: 202 kg/cm²

Heat expansion coefficient: 0,0055 mm/m°C

Water imbibition coefficient: 0,001800

Impact strength: 72 cm

Frictional wear: 1,12 mm

Mass by unit of volume: 2550 kg/m³



UNALTERABLE COLORS
THAT LAST IN THE
WEATHER

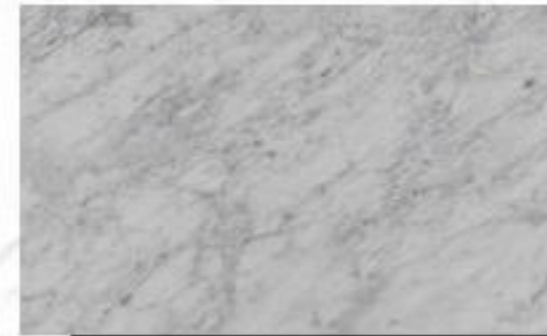


FIRE RESISTANT
AND TO THE HEAT



BRIGHTNESS (LRV)

WHITE CARRARA



WHITE CARRARA

Polished

It is the most characteristic finish and achieves an inimitable effect of reflecting light and objects as if it were a mirror.



WHITE CARRARA

Honed

This finish gives the stone a greater character and greater prominence when it is placed. It reflects light, but with less reflection. The surface is smooth.



WHITE CARRARA

Aged

Through a special treatment, a texture is achieved that enhances the natural properties of the stone and the aesthetic strength of its veins. The surface is somewhat uneven.



WHITE CARRARA

Sandblasting

Through this finish, the resulting product has a rough effect & a sheer touch, perfect for making it more resistant outdoors.



TABLES



WALLS



FLOORS



COUNTERTOPS

GOLD TRAVERTINE STONE

The name describes it, Travertine Gold. It is a special travertine, whose essence is determined by its color, an almost yellow cream that radiates an unusual intensity. An exclusive material, demanded for houses, facades, hotels etc With a luxurious appearance.

Of all the Travertines that form the wonderful collection of Euro Export Projects S.L, Travertino Oro stands out for its intense color, unique and elegant spectrum. As its name suggests, it has a beautiful tonality with a marked yellowish tint that makes it a unique and unmistakable material. And if these signs of identity were few, the small pores of nature.



The natural features make your elegant surface exhibits contribute to making is even more special, if possible. The result is a unique coating, with an exclusive air that personalizes environments and is perfect for classic-style halls and stately bathrooms and rustic-looking facades.



UNALTERABLE COLORS
THAT LAST IN THE
WEATHER



FIRE RESISTANT
AND TO THE HEAT

BRIGHTNESS (LRV)



TABLES

WALLS

FLOORS

Polished

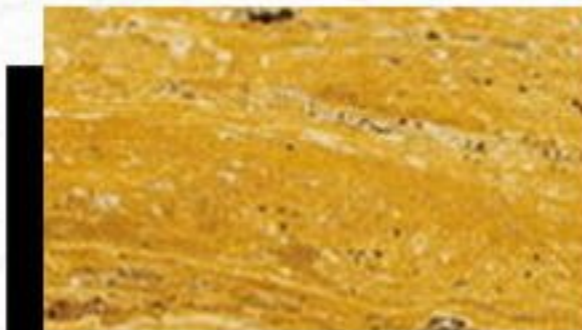
It is the finish par excellence that achieves a completely smooth Natural Stone surface and an inimitable mirror effect that reflects light, enhancing the beauty of the material.



GOLD TRAVENTINE

Honed

Thanks to this smooth and soft textured finish, the surface acquires a matte shine that gives Natural Stone greater character and better reflection of light.



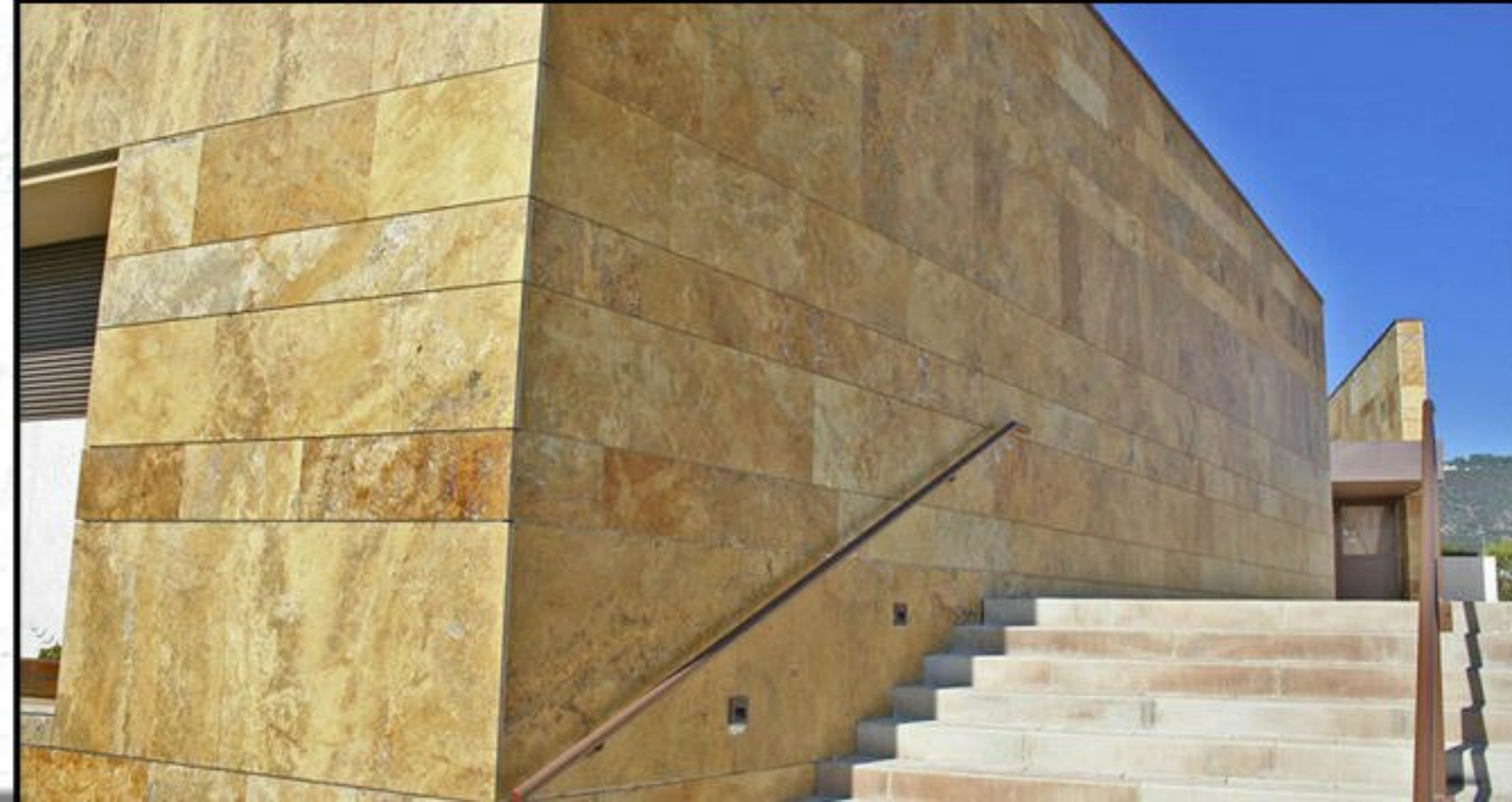
GOLD TREMENTINE

Aged

This finish conveys the passage of time, achieving a shiny surface with an irregular texture that enhances the aesthetics of Natural Stone in its shades and veins.



GOLD TREMENTINE



Antique-inspired gold displays its charisma in the Marvel Gold Top kitchen countertops. Its metallic and grey brushstrokes dot a pure white surface to enhance it.

MARQUINA BLACK

Negro Marquina marble is a rock with some white veins, compact and fine-grained. It is characterized by being a very crystalline and bright marble, with a unique consistency for walls, floors and tops. It is black in color with some white calcite veins. In which we can observe fossil remains. Its powerful black color creates very elegant environments.

ALL FINISHES ESPACIALLY

Aged: Smooth, rough, natural feel

Honed: Matte

Polished: Bright treatment, mirror feeling bush hammered.

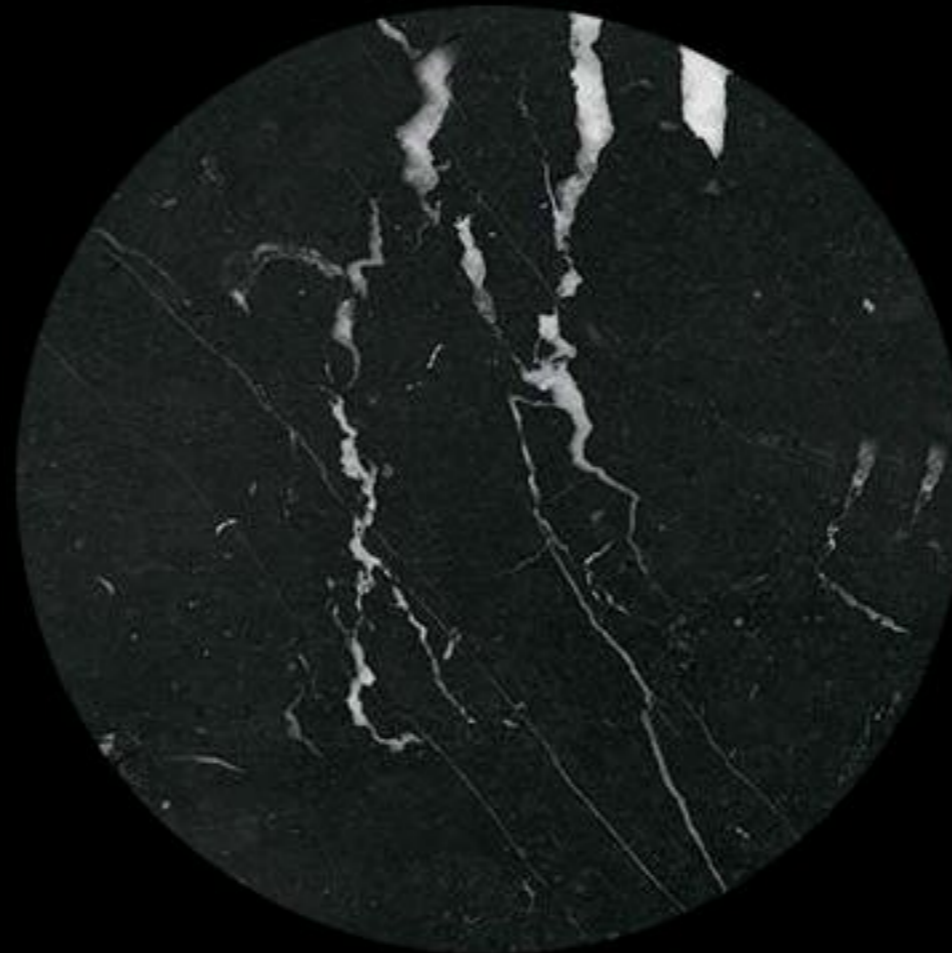
Habitual Sizes in CM :

30X30/30X40/40X40/

40x60/60X30/60x60/60x120 and

Custom Sizes

Thickness Usual : 1/1.5/2 and
3cm.



TECHNICAL DATA:

SPECIFIC WEIGHT 2.69 gr/cm³

ABSORPTION COEFFICIENT 0.17%

RESISTANCE TO COMPRESSION 629 kg/cm²

BENDING RESISTANCE 136 kg/cm²

RESISTANCE TO WEAR 2.90 mm.

IMPACT RESISTANCE 30 cm.

HELLADICITY MODULE n/a

THERMAL ALTERATION n/d



UNALTERABLE COLORS
THAT LAST IN THE
WEATHER

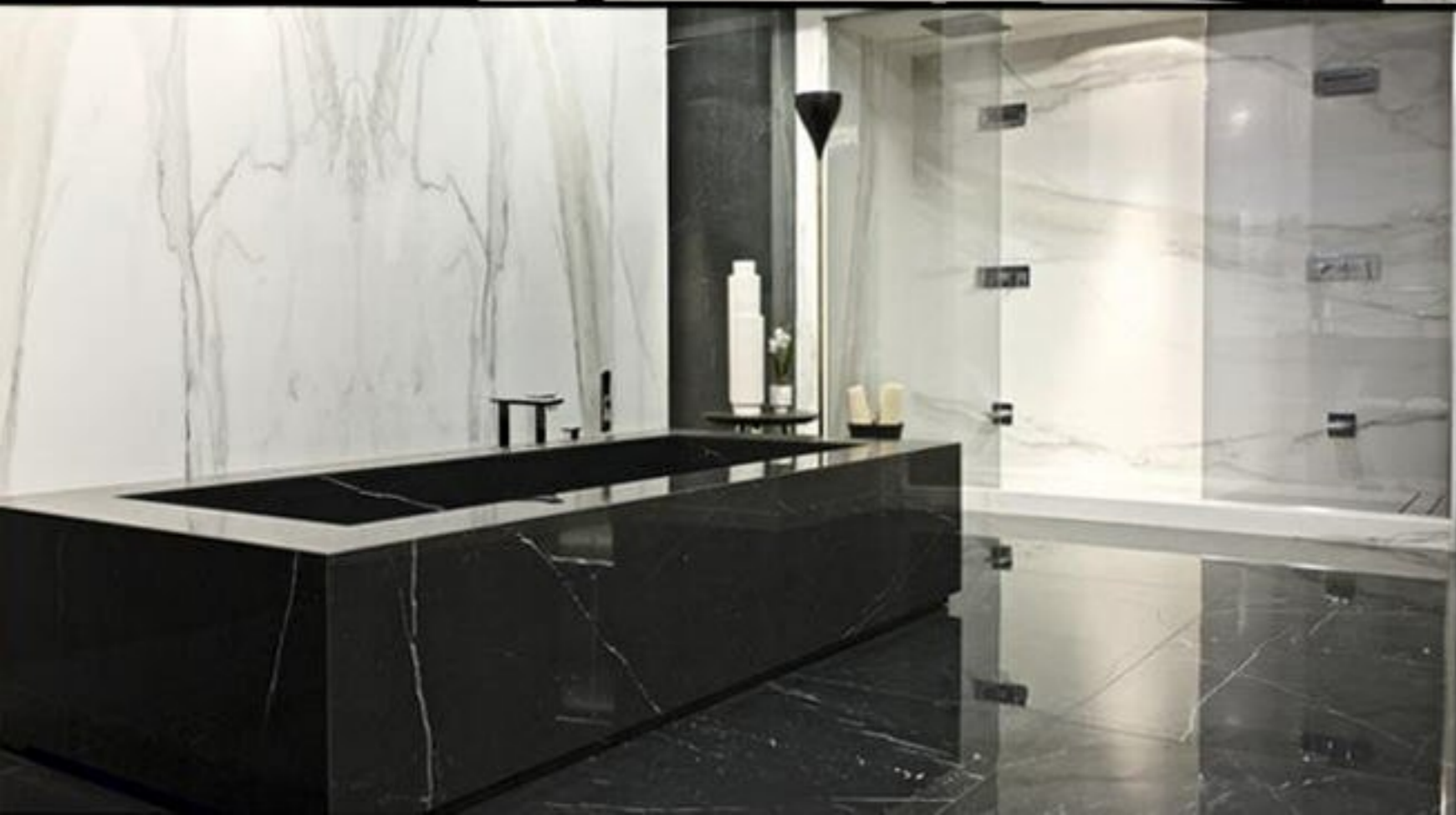


FIRE RESISTANT
AND TO THE HEAT



BRIGHTNESS (LRV)

BLACK MARQUINA



BLACK MARQUINA

Polished

It is the most characteristic finish and achieves an inimitable effect of reflecting light and objects as if it were a mirror.



BLACK MARQUINA

Honed

This finish gives the stone a greater character and greater prominence when it is placed. It reflects light, but with less reflection. The surface is smooth.



BLACK MARQUINA

Aged

Through this finish, the resulting product has a rough effect & a sheer touch, perfect for making it more resistant outdoors.



BLACK MARQUINA

Bush hammered

Through this finish, the resulting product has a rough effect & a sheer touch, perfect for making it more resistant outdoors.



TABLES



WALLS



FLOORS



COUNTERTOPS

YELLOW FOSIL

Yellow Fossil Sandstone, is a yellow sandstone, formed by millions of shells of marine mollusks, very soft, which give it a truly unique texture. It has a high degree of resistance, both to the sun and to extreme changes in temperature, rain, wind, etc. Mostly used for exteriors and wet areas.

Mechanical Propierties:

Apparent specific weight: 2.38 g/cm³ · Vel. perpendicular sonic: 3,800

Bulk density: 2.38 g/cm³ · Perpendicular sound speed: 3,800

Absorption coefficient: 2.20% · Parallel sonic velocity: 4,295

Coefficient of absorption: 2.20% · Parallel sound speed: 4,295

Flexural strength: 91.29 Kg/cm² · Shock resistance: 22 cm

Flexural strength: 91.29 Kg/cm² · Impact resistance: 22 cm

Endurance. to compression: 537.64 Kg/cm²

Compressive strength: 537.64 Kg/cm²

Resistance to wear by friction: 11.72 mm

Abrasion resistance: 11.72mm

Weight loss after: 25 frosts: 0.05%

Weight loss after: 25 frosts: 0.05%

Compressive strength after: 25 frosts: 19.08 Mpa

Compressive strength after: 25 frosts: 19.08 Mpa



Technical Data:

All finishes, especially:

Aged: Smooth, rough, natural feel

Honed: Matte and Raw

Ideal for outdoors, swimming pools etc...

Habitual Sizes in CM: 30X30/30X40/40X40/

40x60/60X30/60x60/60x120/120x120 Custom Sizes

Thickness Usual: 1/1.5/2 and 3cm



UNALTERABLE COLORS
THAT LAST IN THE
WEATHER



FIRE RESISTANT
AND TO THE HEAT



BRIGHTNESS (LRV)

YELLOW FOSIL

Honed

Thanks to this smooth and soft textured finish, the surface acquires a matte shine that gives Natural Stone greater character and better reflection of light.



Sandblasting

With this finish we achieve a rough appearance. We can use it in interior and exterior coatings, as well as in exterior pavements since it is non-slip.



Aged

This finish conveys the passage of time, achieving a shiny surface with an irregular texture that enhances the aesthetics of Natural Stone.



WALLS



FLOORS



DARK EMPERADOR

The Dark Emperador is a fine-grained, dark brown marble with some lighter irregular and crossed veins. It presents some occasional signs of calcite of small dimension. The Dark Emperor is a type of breccial stone. Its main variations normally depend on the different shades of color it can present (darker or lighter), but also on the amount of calcite (more or less). It is a material used for interiors, mostly for floors, walls and stairs. It is a very elegant material, highly demanded by hotels

All Finishes Espacially

Aged: Smooth, rough, natural feel

Honed: Matte

Polished: Bright treatment, mirror feeling bush hammered.

Habitual Sizes in CM :

30X30/30X40/40X40/

40x60/60X30/60x60/60x120 and Custom Sizes

Thickness Usual: 1.5/2 and 3cm.

PETROGRAPHIC NAME Doloesarite

REACTION TO FIRE A1 Class

VAPOR PERMEABILITY

Dry steam resistance: 10,000

Wet Steam Resistance: 10,000



Flexural Strength

Minimum expected value: 8.8MPa

Average value: 13.8MPa

Standard deviation: 2.6MPa

SUPPORT RESISTANCE:

Minimum expected value: 1369N

Average value: 1700N

Standard deviation: 200N

ABRASION RESISTANCE:

Flexural strength after 20 cycles: -2.9%

Dynamic yield strength after 20 cycles: -3.8%

WATER ABSORPTION AT ATMOSPHERIC PRESSURE 2
740 kg/m³

Thermal Resistance: 2740 kg/m³

Resistance to erost number of cycles before alteration Nc: 168



UNALTERABLE COLORS
THAT LAST IN THE
WEATHER



FIRE RESISTANT
AND TO THE HEAT



BRIGHTNESS (LRV)



DARK EMPERADOR

Polished

It is the most characteristic finish and achieves an inimitable effect of reflecting light and objects as if it were a mirror.



DARK EMPERADOR

Honed

This finish gives the stone a greater character and greater prominence when it is placed. It reflects light, but with less reflection. The surface is smooth.



DARK EMEPADOR

Aged

Through a special treatment, a texture is achieved that enhances the natural properties of the stone and the aesthetic strength of its veins. The surface is somewhat uneven.



DARK EMOERRADOR

Sandblasting

Through this finish, the resulting product has a rough effect & a sheer touch, perfect for making it more resistant outdoors.



DARK EMPERADOR



TABLES



WALLS



FLOORS



COUNTERTOPS

CALACATA MARBLE

The beauty of natural stone, especially white marble, is incomparable. Within the different white marbles, we find the calacatta marble. White, pure and at the same time veined with different shades of color, which make each piece a unique work of art. Our calacatta marble is chosen from the best quarries in Carrara, an Italian region famous for the quality and tradition of its white marble, this material of singular beauty that presents different textures and tones with very varied shades of color, to make your project unique and exclusive. An exclusive material, used mostly in Palaces, Hotels and high-level homes

ALL FINISHES ESPACIALLLY

Honed: Matte

Polished: mirror feeling

Habitual Sizes in CM:

30X30/30X40/40X40/

40x60/60X30/60x60/60x120 and

Custom Sizes

Thickness Usual: 2 and 3cm.

A natural, elegant and exclusive stone



Flexural Strength

Availability at origin: Medium.

Resistance to Compression: 1235 Kg/cm.

Flexural Strength: 194 Kg/cm.

Thermal Expansion Coefficient: 0.0080 mm/m°C.

Absorption Coefficient: 0.23%.

Impact Resistance: 48 cm.

Density: 2698 kg/m.

Origin: Italy



UNALTERABLE COLORS
THAT LAST IN THE
WEATHER



FIRE RESISTANT
AND TO THE HEAT



BRIGHTNESS (LRV)



CALACATTA MARBLE



CALACATTA MARBLE

Polished

It is the most characteristic finish and achieves an inimitable effect of reflecting light and objects as if it were a mirror.



CALACATTA MARBLE

Honed

This finish gives the stone a greater character and greater prominence when it is placed. It reflects light, but with less reflection. The surface is smooth.



TABLES



WALLS



FLOORS



COUNTERTOPS

WHITE MACAEL

Macael Marble or White Marble, is an igneous rock that has a white color with a slight regular gray tone.

It is compact and medium-grained, with the occasional presence of grayish or yellow veins, depending on the rip cut. It is a calcitic marble characterized by its homogeneity and the almost absence of gray veins. Ideal for interiors and exterior areas.

All Finishes Especially

Aged: Smooth, rough, natural feel

Honed: Matte

Polished: Bright treatment, mirror feeling bush hammered.

Habitual Sizes in CM :

30X30/30X40/40X40/

40x60/60X30/60x60/60x120 and

Custom Sizes

Thickness Usual: 1.5/ 2 and 3cm.

Blanco macael is ideal for the use of facades, interiors, floors, walls, stairs and sculptures



Technical Data:

Reaction to fire Class A1 UNE-EN 13501

Tactility See Visual

Flexural strength 15.4 MPa UNE-EN 12372

Frost resistance 19% UNE-EN 12371

Breaking load for anchors 1850 N UNE-EN 13364

Abrasion resistance 23.4 mm UNE-EN 14157

PSRV Slip Resistance (Polished) Dry 50 Units

PSRV (polished) wet 5 units UNE-EN 14231

Water absorption 0.1% UNE-EN 13755

Apparent density 2710 g/cm³ UNE-EN 1936

Open porosity 0.3% UNE-EN 1936

Resistance to compression 71 MPa UNE-EN 1926

Thermal shock resistance -0.06%



UNALTERABLE COLORS
THAT LAST IN THE
WEATHER



FIRE RESISTANT
AND TO THE HEAT



BRIGHTNESS (LRV)

White Macael Marble



TABLES



WALLS



FLOORS



COUNTERTOPS

Polished

It is the finish par excellence that achieves a completely smooth Natural Stone surface and an inimitable mirror effect that reflects light, enhancing the beauty of the material.



WHITE MACAEL

Honed

Thanks to this smooth and soft textured finish, the surface acquires a matte shine that gives Natural Stone greater character and better reflection of light.



WHITW MACAEL

Sandblasting

With this finish we achieve a rough appearance. We can use it in interior and exterior coatings, as well as in exterior pavements since it is non-slip.



WHITW MACAEL

Aged

This finish conveys the passage of time, achieving a shiny surface with an irregular texture that enhances the aesthetics of Natural Stone in its shades and veins.



WHITE MACAEL



LIMENSTONE WHITE

Caliza Luna is the most charismatic white limestone given its ability to openly reflect its natural origin, a fact that makes it inimitable. The sedimentation process is evident in the Luna limestone, seeing with the naked eye the innumerable fossils that are identified in this stone. It is a natural material, ideal for exterior cladding and facades. Offering us the Mediterranean environment.

All Finishes Espacially

Aged: Smooth, rough, natural feel

Honed: Matte and Raw

Habitual Sizes in CM:

30X30/30X40/40X40/

40x60/60X30/60x60

60x120 and

Custom Sizes

Thickness Usual: 1.5/ 2 and 3cm



Technical Data:

Hardness: 3 Mohs

Void Ratio: 8%

Unit of volume by weight: 2.31 gr/cm³

Water absorption at atmospheric pressure by weight: 3, 37%

Porosity: 7.78%

Mechanical and technological specifications:

Compressive strength after

Freezing: 465.65 kgf/cm²

Impact resistance: 2kgf.cm/cm³

Compressive

Strength: 485.74kgf/cm²

Flexural strength: 68.26 kg/cm²

Average resistance to

Abrasion: 64 cm³/ 50 cm²



UNALTERABLE COLORS
THAT LAST IN THE
WEATHER



FIRE RESISTANT
AND TO THE HEAT



BRIGHTNESS (LRV)



LIMESTONE WHITE



LIMESTONE WHITE

Honed

This finish gives the stone a greater character and greater prominence when it is placed. It reflects light, but with less reflection. The surface is smooth.



LIMESTONE WHITE

Aged

Through a special treatment, a texture is achieved that enhances the natural properties of the stone and the aesthetic strength of its veins. The surface is somewhat uneven.



LIMESTONE WHITE

Sandblasting

Through this finish, the resulting product has a rough effect & a sheer touch, perfect for making it more resistant outdoors.



WALLS



FLOORS

TRAVERTINE RED

Red Travertine, is a unique medium grain red rock, very compact and composed of 97% calcite and 3% limonite and hematite. It is a highly recommended material for facades, due to its rustic appearance and resistance to exteriors, used in most cases in facades, bathrooms and exterior floors.

All Finishes Espacially

Aged: Smooth, rough,
natural feel honed matte

Polished: Bright treatment,
mirror feeling bush hammered



Technical Data:

Absorption coefficient: 1.23%

Mechanical resistance: to bending under concerted
load 11.52 Mpa resistance com.

After Frost Resistant

Anchor resistance: 2030 N

Abrasion resistance: 2.45 mm.

Slip resistance: 69

Water absorption coefficient by capillarity: 5.62
g7m²*s 0.5

Apparent density: 2.52 g/cm³

Habitual Sizes in CM: 30X30/30X40/40X40/
40x60/60X30/60x6060x120 Costom Sizes

Thickness Usual: 2 and 3cm.



UNALTERABLE COLORS
THAT LAST IN THE
WEATHER



FIRE RESISTANT
AND TO THE HEAT

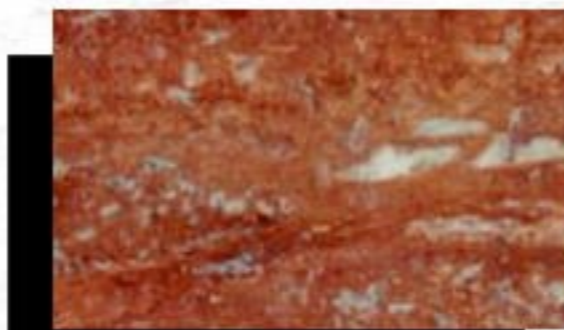


BRIGHTNESS (LRV)

TRAVERTINE RED

Polished

It is the finish par excellence that achieves a completely smooth Natural Stone surface and an inimitable mirror effect that reflects light, enhancing the beauty of the material.



TRAVERTINE RED

Honed

Thanks to this smooth and soft textured finish, the surface acquires a matte shine that gives Natural Stone greater character and better reflection of light.



TRAVERTINE RED

Sandblasting

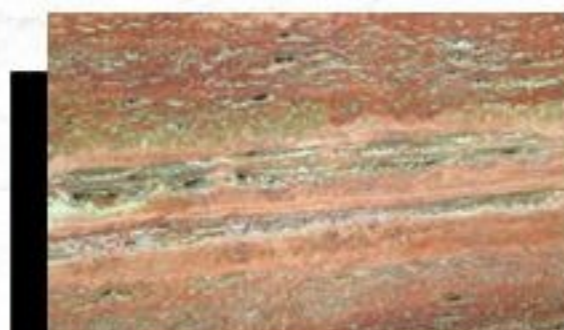
With this finish we achieve a rough appearance. We can use it in interior and exterior coatings, as well as in exterior pavements since it is non-slip.



TRAVERTINE RED

Aged

This finish conveys the passage of time, achieving a shiny surface with an irregular texture that enhances the aesthetics of Natural Stone in its shades and veins.



TRAVERTINE RED



WALLS



FLOORS



TRAVERTINE CLASSIC

Classic, warm and timeless travertine. It is a natural stone composed of calcium carbonate, gypsum and different minerals that are what give color to the different types of travertine. In the case of Classic Travertine, it is the sulfur that gives it that characteristic cream color. This travertine is ideal for interiors, bathrooms, floors, tops, walls and especially for exteriors.

Technical Data:

Hardness (Mohs): 4

Volume in weight: (gr/cm³): 2.50 / in density (gr/cm³) 2.72
Water absorption at atmospheric pressure: by weight (%): 1.00 / By volume (%): 2.30

Water absorption with boiling water: By weight (%): 1.20 / By volume (%): 3.00
Porosity (%): 2.30

Compression flexural strength: (Kgf/cm²): 570

Flexion (kgf.cm/cm³): 11

Bending Flexion (kgf/cm²): 108

Elasticity: (kgf/cm²): 5.38×10⁴

Fortitude ratio (%): 91.9

Porosity grading (%): 8.1

Abrasion resistance (cm³/50 cm²): 28.7

Tensile strength (kgf/cm²): 41



All finishes, especially:

Habitual Sizes in CM: 30X30/30X40/40X40/40x60/60X30/60x60/60x120 and Custom Sizes

Thickness Usual: 2 and 3cm. All finishes, especially

Aged: Smooth, rough, natural feel

Matte: Honed and Raw

Polished: Bright treatment, mirror feeling bush hammered



UNALTERABLE COLORS
THAT LAST IN THE
WEATHER



FIRE RESISTANT
AND TO THE HEAT



BRIGHTNESS (LRV)

TRAVERTINE CLASSIC



TRAVERTINE CLASSIC

Polished

It is the most characteristic finish and achieves an inimitable effect of reflecting light and objects as if it were a mirror.



TRAVERTINE CLASSIC

Honed

This finish gives the stone a greater character and greater prominence when it is placed. It reflects light, but with less reflection. The surface is smooth.



TRAVERTINE CLASSIC

Aged

Through a special treatment, a texture is achieved that enhances the natural properties of the stone and the aesthetic strength of its veins. The surface is somewhat uneven.



TRAVERTINE CLASSIC

Sandblasting

Through this finish, the resulting product has a rough effect & a sheer touch, perfect for making it more resistant outdoors.



TABLES



WALLS



FLOORS



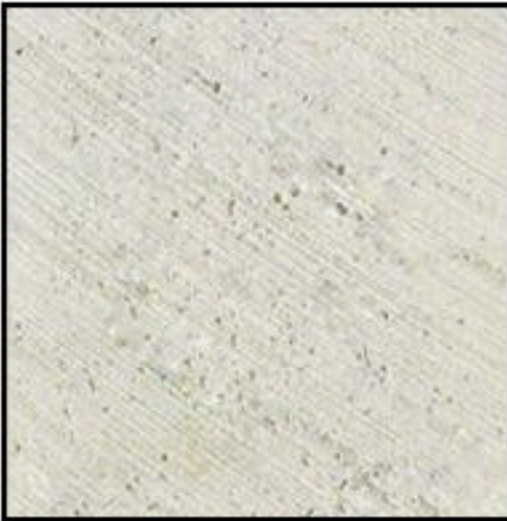
COUNTERTOPS



**"It is better to create than to learn,
creation is the essence of life"**

Julio Cesar

Finishing and data of interest



Raw:

This finish does not have any treatment. It is the stone in its total nature. It has a fine rough appearance. With the marks of the disc cut. It is usually used for exteriors. It is also required to install and polish it on the project once it is installed. Obtaining a top result, in brightness and without joint differences.



Bush hammer:

Pavement made with crushed natural aggregates from a large selection. A machining process is applied to the surface, providing a pleasant texture and high resistance to slipping, thus achieving a great similarity with granite and natural stone. Ideal for non-slip floors, common areas with a high risk of slipping.



Flamed:

It consists of a thermal treatment that can be applied to granite, this finish provides the material with a very high defense against atmospheric chemical alteration. A series of heat sources are applied to the surface (by means of oxyacetylene burners mounted on a gun or mechanical), which provide temperatures above 2,800° Centigrade, and when they pass over the material they cause a thermal shock that causes small sheets to detach.



Polished:

In this case, the polished finish is obtained by repeated abrasion of the surface, achieving a smooth and shiny appearance. On the other hand, through polishing we manage to reduce the porosity of the material, this being an important aspect in marble countertops, as well as in flooring, cladding, stairs, etc... This Finishing is recommended for interiors.



Honed:

The honed marble and natural stone finish provides a smooth, matte surface. The result presents a smooth appearance that is very pleasing to the eye and to the touch. Unlike the polished finish, the honed finish does not have a shine, although it does have a very smooth surface. It is a finish used in most cases for floors, walls, stairs, kitchen countertops and facades. Interior and exterior.



Brushed:

This type of aged finish has a satin look and the natural color of the marble is not fully exposed. On the other hand, this aged finish opens up the natural imperfections and veining of the marble and depending on the type of marble it will be more likely to absorb stains. This finish can be matte or polished, depending on the areas where it is intended. It is usually installed on floors, exterior and interior walls, simulating a rustic appearance,

Types of edges for Stairs and tops of kitchens and stairs



Round edge for countertops in kitchens, bathrooms and stairs



Ingotado Edge



Non-drip



Thickened chamfering



Thickened round



Thickened Half Round



Thickened straight



Beveled



Round



Half round



Straight

Customized transport and packaging for each project



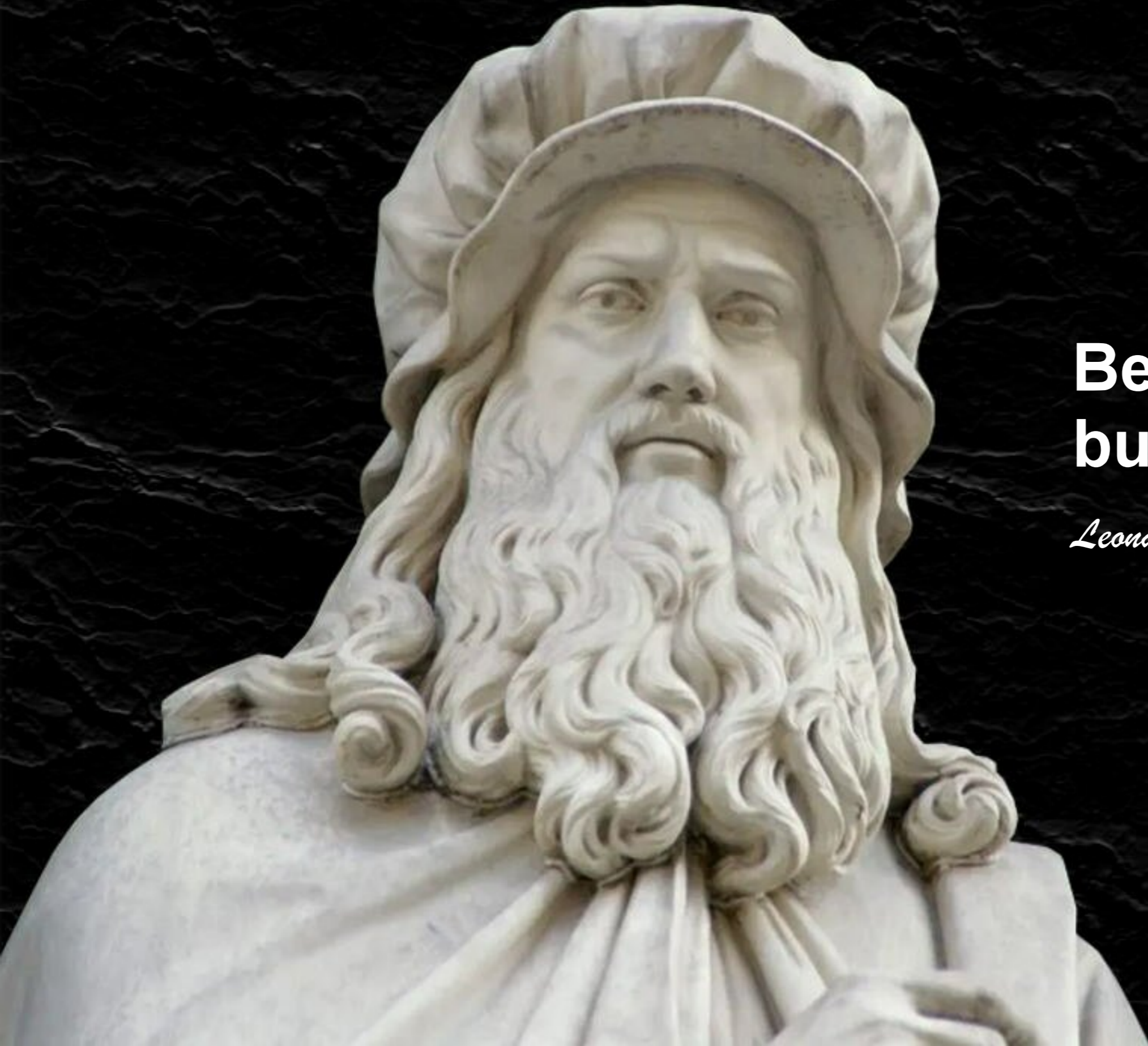
Informative note of approximate capacity in 20-feet containers by thickness of the material:

Thickness 1cm: +/-900 Sqm/M2

Thickness 1.5 cm: +/-600 Sqm/M2

Thickness 2 cm: +/-430 Sqm/M2

Thickness 3 cm: +/-330 Sqm/M2



**Beauty dies with life,
but is immortalized in art.**

Leonardo Davinci



NOTAS

EURO EXPORT PROJECTS S.L. STONE MARBLE SERIES

BLOCKS/SLABS/TILES
QUALITY-FOCUS-INNOVATION



Info Phone: (+34) 633 294 688

Europe Phone: (+34) 634 369 763

Africa Phone: (+251) 929 134 156

info@euroexportprojects.com

www.euroexportprojects.com

EURO EXPORT PROJECTS S.L

**STONE
MARBLE SERIES**

BLOCKS/SLABS/TILES
QUALITY-FOCUS-INNOVATION



**If you're looking for different results,
do not do always the same things**

Albert Einstein

Info Phone: **(+34) 633 294 688**

Europe Phone: **(+34) 634 369 763**

Africa Phone: **(+251) 929 134 156**

info@euroexportprojects.com

www.euroexportprojects.com